

Triple-Port 1394b PCI OHCI Adapter Card

Single Node IEEE-1394b PCI OHCI Solution

Applications

Vehicle software, hardware and system emulation labs
 Non-transformer-coupled IEEE-1394b desktop computer host adapter
 Flight Control, Mission Systems emulation environments

Benefits

Uses industry standard Texas Instruments TSB41BA3 Physical Layer and TSB12LV26 1394a OHCI Link Layer Controller
 Implemented without transformer isolation to reduce costs
 No power over 1394b I/O cable eliminates power and ground shift concerns

Features

Single OHCI IEEE-1394 Beta node

IEEE-1394-2008 compliant

Three Beta only ports per node supporting:

- S100 β (122.88Mb/s)
- S200 β (245.76Mb/s)
- S400 β (491.52Mb/s)

Configurable maximum connection speeds of:

- S100 β
- S200 β
- S400 β

Three IEEE-1394 Bilingual Connectors

Texas Instruments TSB12LV26 OHCI Link Layer Controller and TSB41BA3 PHY

32-Bit, 33 MHz PCI support

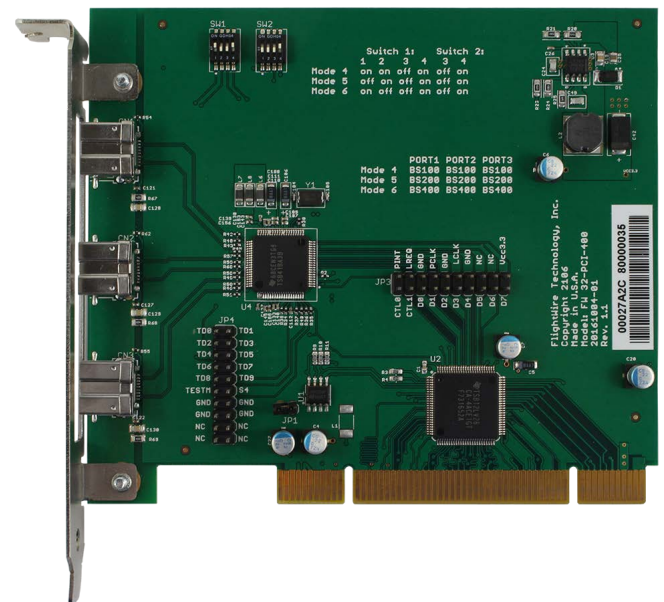
Overview

The FW-32x-PCI-400 is a single node 1394 OHCI host adapter with a 32-bit, 33 MHz PCI host bus interface. Each of the three Beta ports connect to the 1394 network through a 9-pin bilingual connectors to allow legacy Beta 6-pin systems to connect using 9-pin to 6-pin cables. The bilingual connector also supports 9-pin to 9-pin Beta cables.

The FW-32x-PCI-400 provides Flight Control, Vehicle Management Systems, Mission Systems or Avionics simulation applications within a single channel, SWAP-optimized solution.

The IEEE-1394 connectivity is provided by one Alpha (1394a) Texas Instruments TSB12LV26 Open Host Controller Interface (OHCI) Link Layer Controllers with one Beta (1394b) TSB41BA3 PHY device. The Alpha Link and Beta PHY (together form a Hybrid node) require the device observe Alpha timing on the 1394 bus. The TSB12LV26 implements PCI 2.2 32-bit host interface and the 1394 Beta PHY is capable of S100 β , S200 β and S400 β operation.

The industry standard 1394 OHCI allows for industry standard software support.



Triple-Port 1394b PCI OHCI Adapter Card

Single Node IEEE-1394b PCI OHCI Solution

Complete Product Support Program

As our customers can attest, the New Wave DV team prides itself on excellent customer support. New Wave DV provides industry standard warranties on its products, but it is the human factor that makes our support so valuable to our customers. Our team takes the time and effort to ensure that the customer experience with our products is a positive one.

Our Commitment

New Wave DV is committed to providing the latest innovations in technology, architectures, and techniques to keep our customers one step ahead of the rest. Our products are intended to offer our customers an entirely unique out-of-the-box experience.

Ordering Information

FW-32x-PCI-400: 1394b PCI card, 1 node 3 port, TI PHY and Link, 3x electrical ports, no transformers, XIO2213B and TSB41BA3 Host Adapter

Technical Specifications

INTERFACES

32-Bit, 33 MHz PCI
3-Port IEEE-1394 Beta 9-pin connectors

DATA RATES

S100 β , S200 β , and S400 β

POWER REQUIREMENTS

5V PCI Power

COMPLIANCE

IEEE-1394 beta (1394b) PHY
IEEE-1394 alpha (1394a) OHCI Link Layer
32-bit, 33 MHz PCI support

DIMENSIONS

107 mm (width) x 123 mm (length)

TEMPERATURE

Operating: 0°C to 70°C
Storage: -45°C to 85°C

FOR MORE INFORMATION:

www.newwavedv.com
info@newwavedv.com
Phone +1 952-224-9201

New Wave DV
4950 W 78th St. Minneapolis,
MN 55435 USA

